



**RHON  
RACER**



**INDIAN SCOUT  
2016**





# WHAT'S BOAR?



Since 2009, Custom Chrome Europe has inspired the scene with a new slogan: „Bolt On and Ride“. While neither „Bolt On“ nor „Ride“ are new themes in a long established and creative customizing scene, the CCE team has successfully combined both themes into now annually built custom bikes which are based on existing motorcycle models that are modified with the latest and best parts available from the worldwide aftermarket. „Bolt On“ stands for easy to mount custom parts, some to be installed by the owner or garage customizers, others, more sophisticated parts, by professional CCE partners, custom shops or authorized Harley-dealers – but it never stopped the individual builder from further individualization, be it by color, surface finish treatment, engravings or what ever creative ideas come to mind. And the “Ride” part? This is not just for pleasure, but assures the CCE team that these parts will work under rough and sometimes extreme conditions when the CCE team is “On the Road” to events all over Europe. But yes, the “Ride” part is also fun ...

# RHÖN RACER

---

If it comes to customizing any of the new Indian models there is little doubt which model dominates the current „Indian Customizing“ scene: The powerful and lightweight Scout models, available in three base versions certainly have inspired builders and owners to individualize their rides. Rhönmotor's bold Café Cruiser has two components that immediately catch the eye when the „Rhön Racer“ is flashing by: Burly Brand's Café Sport fairing and the Café Racer tailend, hand-hammered into shape by Blechfee Jochen Lehman. The clean style of the bike is achieved with the well-planned combination of CCE-distributed parts that get rid of many „oversized“ stock parts – check them out in this brochure!

Looking into the Indian Scout model range, all parts used in this project – except for the Kuryakyn „Tresher“ footpegs that would not fit the „Bobber“ which uses floorboards – could be applied to any of the Indian models: Scout, Scout Sixty and Bobber. Rolling chassis and bodyparts don't differ that much, even ground clearance (Bobber 123 mm / Scout 135 mm) and lean angle (Bobber 29° / Scout 31°) are not as different. With its clean look – and the excellent craftsmanship of the „Rhön Racer“ – this Custom-Scout is destined to be a great addition to the 2019 „Bolt On And Ride“ fleet and a inspiration to all Scout owners.

A man and a woman are standing in a motorcycle shop. The man is on the left, wearing a black t-shirt with a skull logo and the text 'anK...'. The woman is on the right, wearing a black tank top and glasses. They are standing next to a white Indian Scout motorcycle. In the background, there are other motorcycles, a wooden wall, and a white helmet with red and blue stripes. The text 'AXEL WIEDEN' is written in large white letters across the middle of the image, and 'RHÖNMOTOR, FLIEDEN' is written in smaller white letters below it.

# AXEL WIEDEN

RHÖNMOTOR, FLIEDEN



# RHÖN RACER

---

## BIKE --- INFO

MODEL	Indian Scout
YEAR	2019
CREATED BY	Rhönmotor, Flieden
TIME	6 weeks (2019)
BIKE NAME	RHÖN RACER
PAINTJOB	Rhönmotor, Flieden









---

## CAFE RACER TAIL SECTION KIT

990260 15-19 INDIAN SCOUT

CATALOG EDITION 48 | PAGE 2.29



---

## CAFE SPORT FAIRING

901021 35-49MM FORKS, 5,75" HEADLAMP

CATALOG EDITION 48 | PAGE 2.94



**KURYAKYN** 

---

## SPRINT CHIN SPOILER

775672 15-19 INDIAN SCOUT

CATALOG EDITION 48 | PAGE 2.96



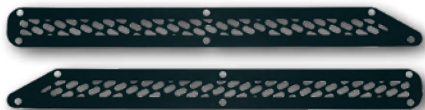
**KURYAKYN** 

---

## SPRINT RADIATOR SIDE ACCENTS

775674 15-16 INDIAN SCOUT

CATALOG EDITION 48 | PAGE 2.96



**KURYAKYN** 

---

## SPRINT SWING ARM FRAME ACCENTS

775675 15-19 INDIAN SCOUT

CATALOG EDITION 48 | PAGE 2.97



**KURYAKYN** 

---

## THRESHER SHIFT & BRAKE PEG

775959 VICTORY & INDIAN, SATIN BLACK, EACH

CHECK CCE DEALER STORE





**KURYAKYN** 

## THRESHER PEGS

775955 WITHOUT MALE MOUNT ADAPTERS, SATIN BLACK

CHECK CCE DEALER STORE



for reference only



**KURYAKYN** 

## SPLINED PEG ADAPTER

778893 15-19 INDIAN SCOUT, BLACK

CHECK CCE DEALER STORE





## HANDLEBAR Z-BAR FLAT

916285 7/8", BLACK

915879 ADAPTOR SLEEVES 7/8" HANDLEBAR TO 1" RISER

CHECK CCE DEALER STORE



## MEMORY FOAM GRIPS

990265 15-19 INDIAN MIDSIZE, BLACK

CATALOG EDITION 48 | PAGE 4.105



**motogadget**

---

## M.VIEW BAR END MIRROR

913452 SPY BAR, LEFT AND RIGHT, EACH, BLACK

CATALOG EDITION 48 | PAGE4.122



**motogadget**

---

## M.VIEW BAR EXTENSION

913452 1", 7/8", PAIR, BLACK

CATALOG EDITION 48 | PAGE4.123



**J.W. SPEAKER**  
*Engineered. Lighting. Solutions.*



## LED ADAPTIVE TECHNOLOGY HEADLIGHT

890443 5 3/4", BLACK

CATALOG EDITION 48 | PAGE 5.18

## SIDEMOUNT LICENSE PLATE KIT

618463 86-19 SPORTSTER, 180X200 MM, BLACK

CATALOG EDITION 48 | PAGE 5.26





## ZC-LINE MICRO TURN SIGNAL

899992 FITS 39 - 41 MM FORK TUBES, PAIR, BLACK

CATALOG EDITION 48 | PAGE 5.69



## RHOMBUS S DARK TURN SIGNAL/TAIL-LIGHT/BRAKE LIGHT

912455 REAR, RIGHT, EACH

912456 REAR, LEFT, EACH

CATALOG EDITION 48 | PAGE 5.85



---

## 10-GAUGE STATOR COVER

990183 15-19 INDIAN SCOUT, BLACK DEEP CUT

CATALOG EDITION 48 | PAGE 9.104



---

## 10-GAUGE THERMOSTAT COVER

990189 15-19 INDIAN SCOUT, BLACK DEEP CUT

CATALOG EDITION 48 | PAGE 9.107



---

## 10-GAUGE ENGINE COVER

990185 15-19 INDIAN SCOUT, BLACK DEEP CUT

CATALOG EDITION 48 | PAGE 9.107



---

## 10-GAUGE FRONT DRIVE PULLEY COVER

990196 14-16 INDIAN SCOUT, 16 OCTANE

CATALOG EDITION 48 | PAGE 12.8



## BILLET WHEELS - MERIDIAN

602746 19" X 3.00", MIDNIGHT SERIES

602743 18" X 5.50", MIDNIGHT SERIES

CATALOG EDITION 48 | PAGE 13.11

## HUB KITS FOR INDIAN SCOUT MODELS

990159 FRONT HUB, BLACK

990161 REAR HUB, BLACK

CATALOG EDITION 48 | PAGE 13.16



*Dr. Jekyll & Mr. Hyde®*

THE EXHAUST

## SHORTY STREETFIGHTER

**904794 SHORTY STREETFIGHTER, BLACK**

FOR MORE DETAILS CHECK OUT OUR DR. JEKILL & MR. HYDE CONFIGURATOR AT  
[WWW.CUSTOM-CHROME-EUROPE.COM](http://WWW.CUSTOM-CHROME-EUROPE.COM)

CHECK CCE DEALER STORE



**PIRELLI**

## NIGHT DRAGON

**683539 120/70 ZR19 M/C (60W), FRONT**

**683544 180/55 R 18 M/C (74W) TL, REAR**

CATALOG EDITION 48 | PAGE 13.59



**GALFER**

---

## DISC WAVE DF W BRAKE ROTOR

990228 15-17 INDIAN SCOUT

CATALOG EDITION 48 | PAGE 13.99



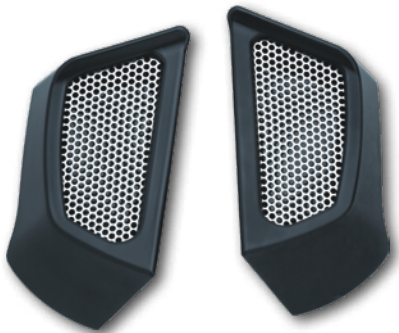
ADVANCED SUSPENSION TECHNOLOGY

---

## S36 TWIN SHOCK

990253 15-18 INDIAN SCOUT, 293MM, BLACK

CATALOG EDITION 48 | PAGE 15.61



**KURYAKYN** 

## SIDE SCOOPS

775625 15-19 INDIAN SCOUT, BLACK

CHECK CCE DEALER STORE



**TXI**  
CUSTOMPARTS & BIKES

## FRONT FENDERS

890628 84-17 SODFTAIL, NON CUT OUT

CATALOG EDITION 48 | PAGE 16.2

RIDE UNRIVALLED  
CUSTOM  CHROME  
BOLT ON AND RIDE



*Coffee Racer*



BLACKLINE  
BEAUTY 



 SPEED KING



  
Bag 'n' Red



*Bolster*



**BLACK BOB**



**BIG BAD JOHN** 



SILVER STAR  




**CUSTOM CROSS**



FISHERMAN'S  
CHOP 



**SEXY THING**



  
BLACK PEARL



*Evil King*



**BRAINBLASTER**





SPEED PEAK

BLOCKBUSTER

Knight Knuckle

SLIM JIM

alligator



LILY

Special  
Spice

BLUE  
BANDIT

Pony  
Express

HUNGLINGER



Sportlin

SPORTY  
SPICE

HOLLISTER

BLACK MESH

HUNDERBORN



SPYKE

Nº SPORTY

THE FUSION

Moccarica

GC Eagle



CROSS  
BOE



BRATSTER



RHON  
RACER



RIDE UNRIVALLED  
CUSTOM  CHROME  
BOE ON AND RIDE





for more details check [www.custom-chrome-europe.com](http://www.custom-chrome-europe.com)



Check Dealer Store!  
[custom-chrome-europe.com](http://custom-chrome-europe.com)



World's Finest Products For Harley-Davidsons

**Custom Chrome Europe GmbH**  
Carl-von-Ossietzky-Straße 8  
55459 Grolsheim/Germany  
Phone: +49 (0) 6721 - 4 007 - 0  
Fax: +49 (0) 6721 - 4 007 - 100  
e-mail: [info@customchrome.de](mailto:info@customchrome.de)  
[www.custom-chrome-europe.com](http://www.custom-chrome-europe.com)